



Dimensions and weights			
Width			
Including packaging	[mm]	580	
Excluding packaging	[mm]	515	
Depth			
Including packaging	[mm]	910	
Excluding packaging	[mm]	777	
Height			
Including packaging	[mm]	830	
Excluding packaging	[mm]	627	
Weight			
Including packaging	[kg]	67	
Excluding packaging	[kg]	54	
Safety clearances			
Rear	[mm]	50	
Right	[mm]	50	
Left (larger gap recommended for servicing)	[mm]	50	
Top (for ventilation)	[mm]	500	

Height with easyTOUCH panel

Appliances with an easyTOUCH panel are 20 mm higher than the specified value.

Electrical connected load ratings

3N~ 400V 50/60Hz (3/N/PE)			
Rated power consumption	[kW]	7,1	
Convection power	[kW]	6,8	
Motor power	[kW]	0,25	
Rated current	[A]	14,8	
Fuse	[A]	16	
Recommended conductor cross-section for wires laid uncovered in air up to 5 m in length.	[mm ²]	5G2.5	
3~ 230V 50/60Hz (3/PE)			
Rated power consumption	[kW]	7,1	
Convection power	[kW]	6,8	
Motor power	[kW]	0,25	
Rated current	[A]	28,5	
Fuse	[A]	35	
Recommended conductor cross-section for wires laid uncovered in air up to 5 m in length.	[mm ²]	4G4	
3~ 200V 50/60Hz (3/PE)			
Rated power consumption	[kW]	7,1	
Convection power	[kW]	6,8	
Motor power	[kW]	0,25	
Rated current	[A]	21,1	
Fuse	[A]	25	
Recommended conductor cross-section for wires laid uncovered in air up to 5 m in length.	[mm ²]	4G4	

Heat output

Heat output			
Latent heat	[kJ/h]	1330	(0.37 kW)
Sensible heat	[kJ/h]	1450	(0.40 kW)

Water connection

Water supply (cold only)	
Shut-off device	With EA (verifiable) check valve and dirt filter

Water connection			
Water supply			
Without CONVOClean system		2 x G 3/4"	permanent connection recommended
With CONVOClean system			
Flow pressure			
Without CONVOClean system	[kPa]	200 - 600 (2 - 6 bar)	
With CONVOClean system	[kPa]	300 - 600 (3 - 6 bar)	
Water drain			
drain version			permanent connection (recommended) or funnel waste trap
Type	DN	40	

Water quality

water quality for general use			drinking water quality (install water treatment unit if necessary)
Hardness for injection			
German degrees of hardness (general hardness: GH)	[°dH]	4 - 7	
French degrees of hardness	[TH]	7 - 13	
English degrees of hardness	[°e]	5 - 9	
International	[ppm]	70 - 125	
Chemical	[mmol/l]	0,7 - 1,3	
Hardness for condenser, cleaning			
German degrees of hardness (general hardness: GH)	[°dH]	4 - 20	
French degrees of hardness	[TH]	7 - 35	
English degrees of hardness	[°e]	5 - 25	
International	[ppm]	70 - 360	
Chemical	[mmol/l]	0,7 - 3,6	
Properties			
temperature (T)	[°C]	max. 40	
conductivity	[µS/cm]	min. 20	
pH		6,5 - 8,5	
Cl ⁻	[mg/l]	max. 100	
SO ₄ ²⁻	[mg/l]	max. 150	
Fe	[mg/l]	max. 0.1	
Carbonate hardness (KH)	[°dH]	Low GH	

Maximum permissible loading weight

GN (containers, shelf-grills, baking trays)	
Per combi steamer	[kg] 20
Per shelf	[kg] 5

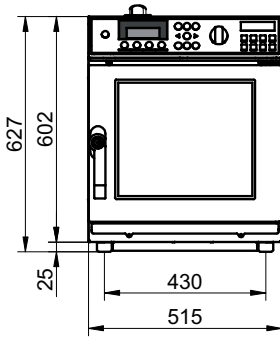
Capacity

Quantity	
GN 1/1 depth 40 mm	[Qty] 6
GN 1/1 depth 65 mm	[Qty] 4
Plate up to Ø 26 cm	[Qty] 8

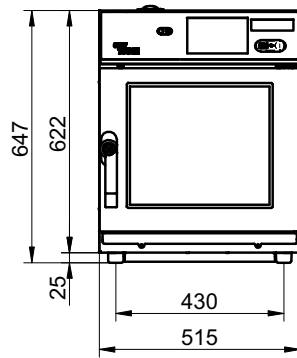
Appliance technical standards

Degree of protection	IPX4
Approval mark according to national regulations	TÜV/GS, DIN GOST TÜV, SVGW
Noise emission	
Measured	[dBA] max. 60

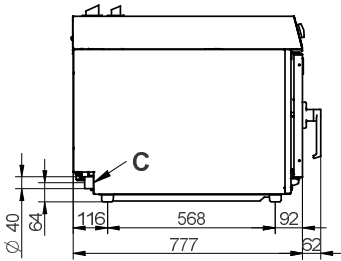
Appliance with standard controls



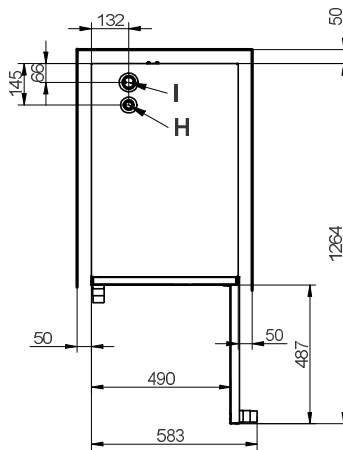
Appliance with easyTOUCH controls



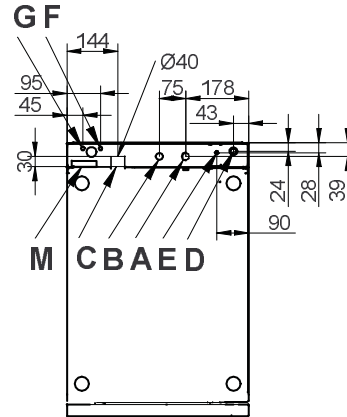
Side view



View from above with wall clearances



Connections on the underside



Meaning of labeled elements

A	Water connection Soft water G3/4"	E	Equipotential bonding	H	Air vent
B	Water connection Cold water G3/4"	F	Nozzle detergent connection (Neutralizer)	I	Ventilation port
C	Drain connection DN 40	G	Cleaning agent connection (Cleaner)	M	Overflow 60 x 20
D	Electrical supply				

This document is to be used solely for planning purposes. Please refer to the Installation manual for instructions on installation and positioning.



ISO 9001
ISO 14001

